



**Ragazzon**

**HIGH PERFORMANCE  
STAINLESS STEEL EXHAUSTS**

## SCHEMA DI MONTAGGIO - ASSEMBLY SCHEDULE

COD. **55.0553.00**






REV. **00**

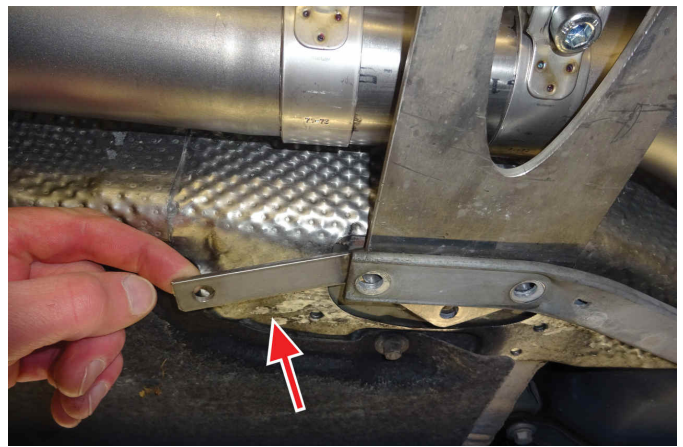
DEL. **24/03/2022**

TEC-LOG **G.Dalto**

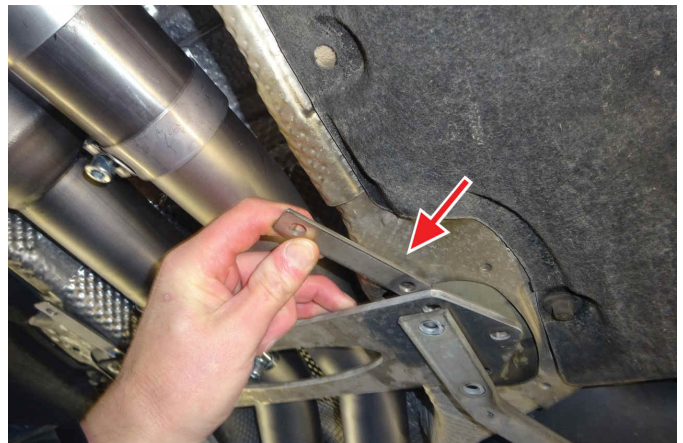
Descrizione **BMW M4 F82**

**Fig. 1**

-  Inserire gli spessori come in foto.
-  Insert the spacer as shown in the picture.
-  Insérer l'entretoise comme indiqué sur la photo.
-  Insertar los espaciadores como en la foto.
-  Den Abstandhalter wie im Foto einstecken.



**Fig. 2**



**Fig. 3**





**HIGH PERFORMANCE  
STAINLESS STEEL EXHAUSTS**

Fig. 4

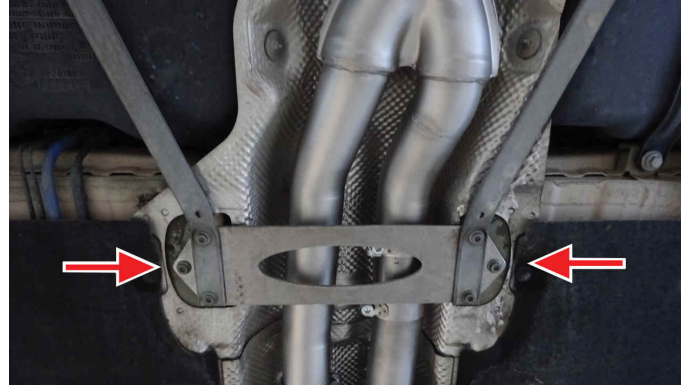


Fig. 5

